

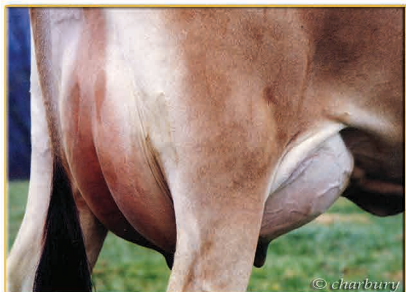
Northeast Jersey Classic & Breeder's Sale

Featuring 25 elite tie-up consignments as well as commercial offerings in a volume format

**OVER 200 REGISTERED
JERSEYS WILL SELL**

April 28, 2018 • 11:00 a.m. (EDT)

Hosted by Dusty Creek Farm
800 Creek Rd., Wallingford, Vt. 05773



PEARLMONT HALLMARK L CLASSY, E-92%

3-9 304 17,860 4.9% 875 3.7% 660

A CASINO September calf sells and is a potential seventh generation Excellent! She has the looks to be a great one. "Classy" is her third dam. Her fourth dam is an E-95% CHOICE-P. Sterling Richardson, Vt.



HIGH LAWN HEADLINE

QUARTZ-ET, VG-83%

4-4 294 3x 24,890 4.9% 1,214 3.6% 906
Her polled OLIVER-P granddaughter sells, born November 2017. The dam is a VG-83% PROMISE. Gary & Debbie Moore, N.Y.



LUCKY HILL JOKER WABORITA, VG-87%

4-5 305 22,880 5.0% 1,134 3.6% 820

Her fresh LEMONHEAD granddaughter sells and is +25.4 GJUI and +154 GJPI. The dam is a VG-85% BALLISTIC. A maternal sister to the consignment sold for \$24,700 at last year's All American Sale. Lucky Hill Farm, Vt. They also send a +176 GJPI daughter of JX BALTAZAR {5}.



BILLINGS ACTION SASSY, E-93%

5-2 305 18,050 4.6% 828 3.7% 661

Selling her July 2016 VARIETY daughter due in September to GENTRY. The next dam is an E-95% BARBER followed by an E-91% JUNO. Billings Farm & Museum, Vt.



MENDA EXCITATION LYND SAY-ET, E-94%

3-7 305 3x 21,430 4.6% 984 3.9% 828

Her April 2017 great-granddaughters sells. The dam is a VG-81% PREMIER followed by a VERBATIM. The next dam is a "Lyndsay." Menda Jerseys, Vt.



KEMP KO LEMVIG DEBORHA, E-90%

9-10 305 18,090 5.4% 974 3.5% 638

Selling her TEXAS granddaughter due in July. The dam is a VG-85% CARRIER. Also selling an IRWIN great-granddaughter due in August. Two more Excellent dams back "Deborha." Kempko Syndicate, Mass.

SOMETHING FOR EVERYONE IN THIS BREEDER'S SALE

with over a dozen show heifers for the 2018 show season and seven milk cows with outstanding udders. Over 175 will sell in the volume sale with many more highlights from Holmes Farm, Highland Farms Inc., Dave and Melanie Carmichael, Spring Brook Foundation, Scott and Heidi Mason, Richardson Family, Mapleline Farms and others.



JMS

Jersey Marketing Service

6486 E. Main Street, Reynoldsburg, OH 43068
614.322.4473 Jessica Adamson 614.322.4496 fax
JMS@USJersey.com | <http://JMS.USJersey.com>

Jersey
Auction
Live.com

This sale will be broadcast live on
JerseyAuctionLive.com.

Catalogs available to download at
<http://jms.usjersey.com>
or by request at jms@usjersey.com

Offering a fall yearling, JX Holmesland Avon Cherry {3}, that is +28.9 GJUI and +159 GJPI. The dam is EX with over 18,000M. Jeffrey Holmes, N.H.

A June 2017 COLTON sells that is +26.2 for GJUI. Her dam is a VG-87% CRITIC-P followed by an E-92% JX GANNON {2}. Kerry Gawalt, Vt.

Selling a December WICHITA calf out of a VG-84% LEGACY. The grandam is an E-94% ACTION with records over 26,000M. Tristan Phillips, Crescent Farm, N.H.

For more information contact the sale staff:

Greg Lavan, Manager 614.216.8838
Brenda Snow, Area Representative 802.249.2659
Jason Robinson, Logistics Supervisor 614.216.5862
Erica Davis, Internet Marketing 614.361.9716
Sara Barlass, Area Representative 614.256.6502